



YORKSHIRE  
HOUSE

# An inspiring place to work

*Modern offices from  
1,492 - 8,359 sq ft.*





# Stylish and contemporary office space in the heart of Liverpool's business district

*With spacious and flexible floor plates, Yorkshire House offers an environment that is an inspiring place to work.*

The building provides high class accommodation with beautiful architectural details combined with a stunning modern interior.

The owners of Yorkshire House have embarked upon a major refurbishment of the building, including new entrance, foyer, enhanced common areas and refurbishment of available office floors.



# In the heart of the business district

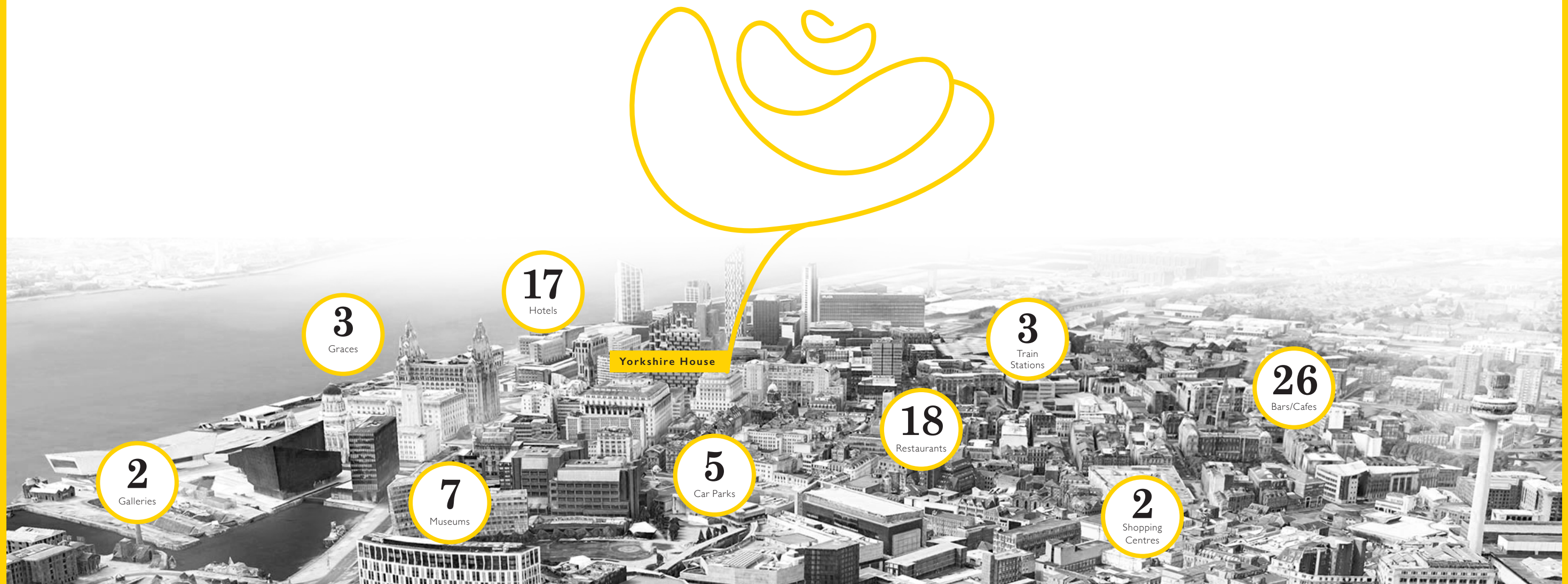
*Yorkshire House provides bright contemporary office space.* The building offers flexible suites of high quality office accommodation with stunning views towards the River Mersey.

Transport links are superb and the building has onsite parking in the basement.



# An ideal location

All within half a mile radius



**17**  
Hotels

**3**  
Graces

**3**  
Train Stations

**26**  
Bars/Cafes

Yorkshire House

**18**  
Restaurants

**5**  
Car Parks

**2**  
Shopping Centres

**7**  
Museums

**2**  
Galleries

# 1st floor accommodation

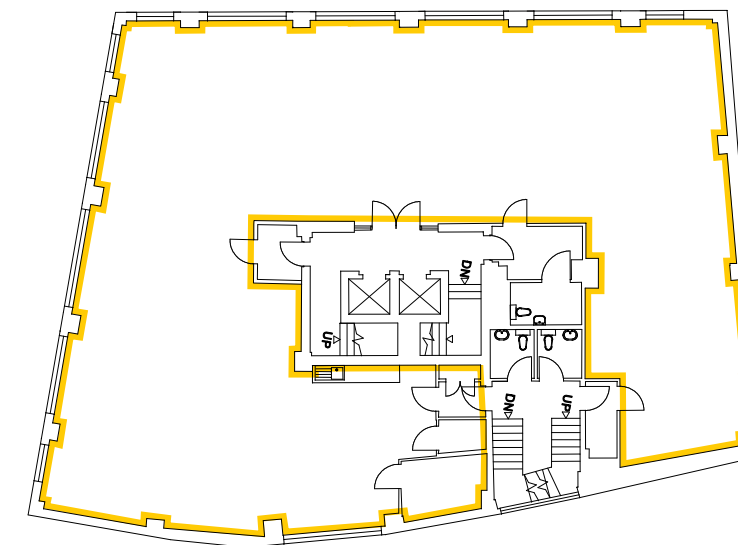
Suite  
First Floor

Size sq.ft  
3,316

Car spaces  
2



First Floor



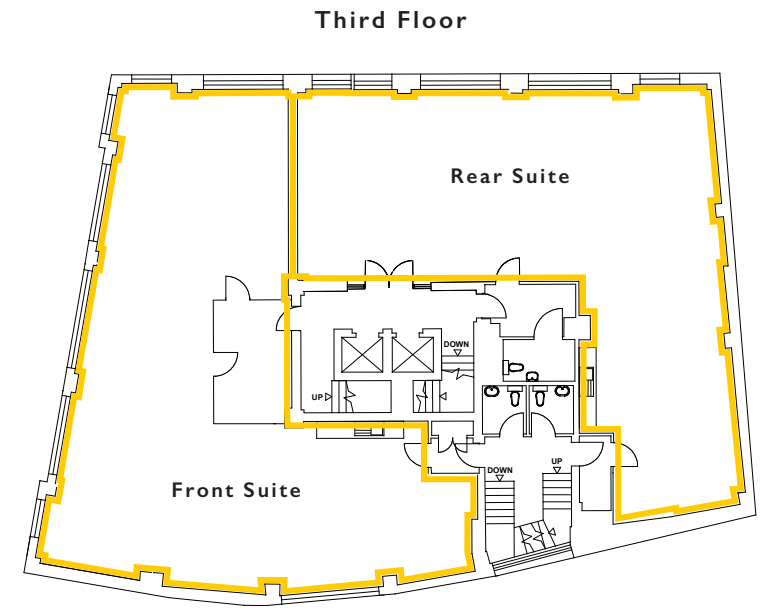
## 1st floor specification

- Passenger lifts from sub-basement parking to the seventh floor
- LED lighting
- Perimeter trunking
- Cycle storage
- Shower facilities
- Secure car parking
- Comfort cooling
- 24 hour access



# 3rd floor accommodation

Suite	Size sq.ft	Car spaces
Third Floor Front	1,791	1
Rear	1,492	1



# 3rd floor specification

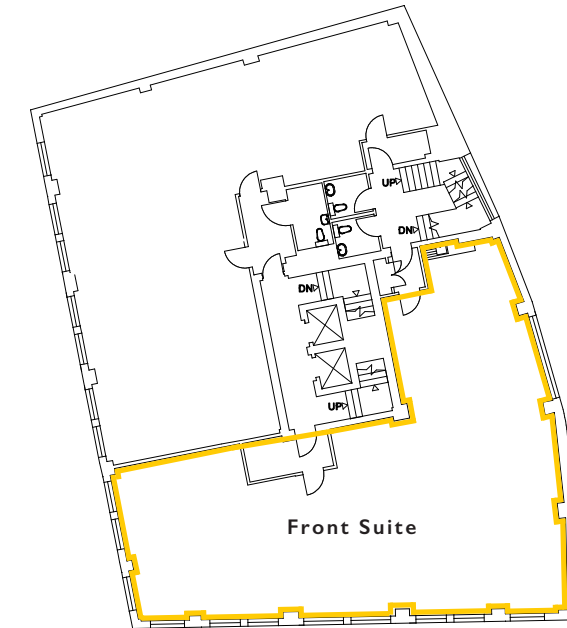
- Passenger lifts from sub-basement parking to the seventh floor
- LED lighting
- Perimeter trunking
- Cycle storage
- Shower facilities
- Secure car parking
- Comfort cooling
- 24 hour access

# 4th floor accommodation

Suite	Size sq.ft	Car spaces
Fourth Floor (Front)	1,760	1



Fourth Floor



## 4th floor specification

- Passenger lifts from sub-basement parking to the seventh floor
- LED lighting
- Perimeter trunking
- Cycle storage
- Shower facilities
- Secure car parking
- Comfort cooling
- 24 hour access





**YORKSHIRE HOUSE**  
**18 Chapel Street, Liverpool, L3 9AG**

**Andrew Byrne**  
**CBRE**

t: 0151 471 4915  
m: 07823 520540  
e: [andrew.byrne@cbre.com](mailto:andrew.byrne@cbre.com)

**Andrew Owen**  
**Worthington Owen**

t: 0151 363 3877  
m: 07798 576 789  
e: [andrew@worthingtonowen.com](mailto:andrew@worthingtonowen.com)

**CBRE**



A Millfield Estates Building

